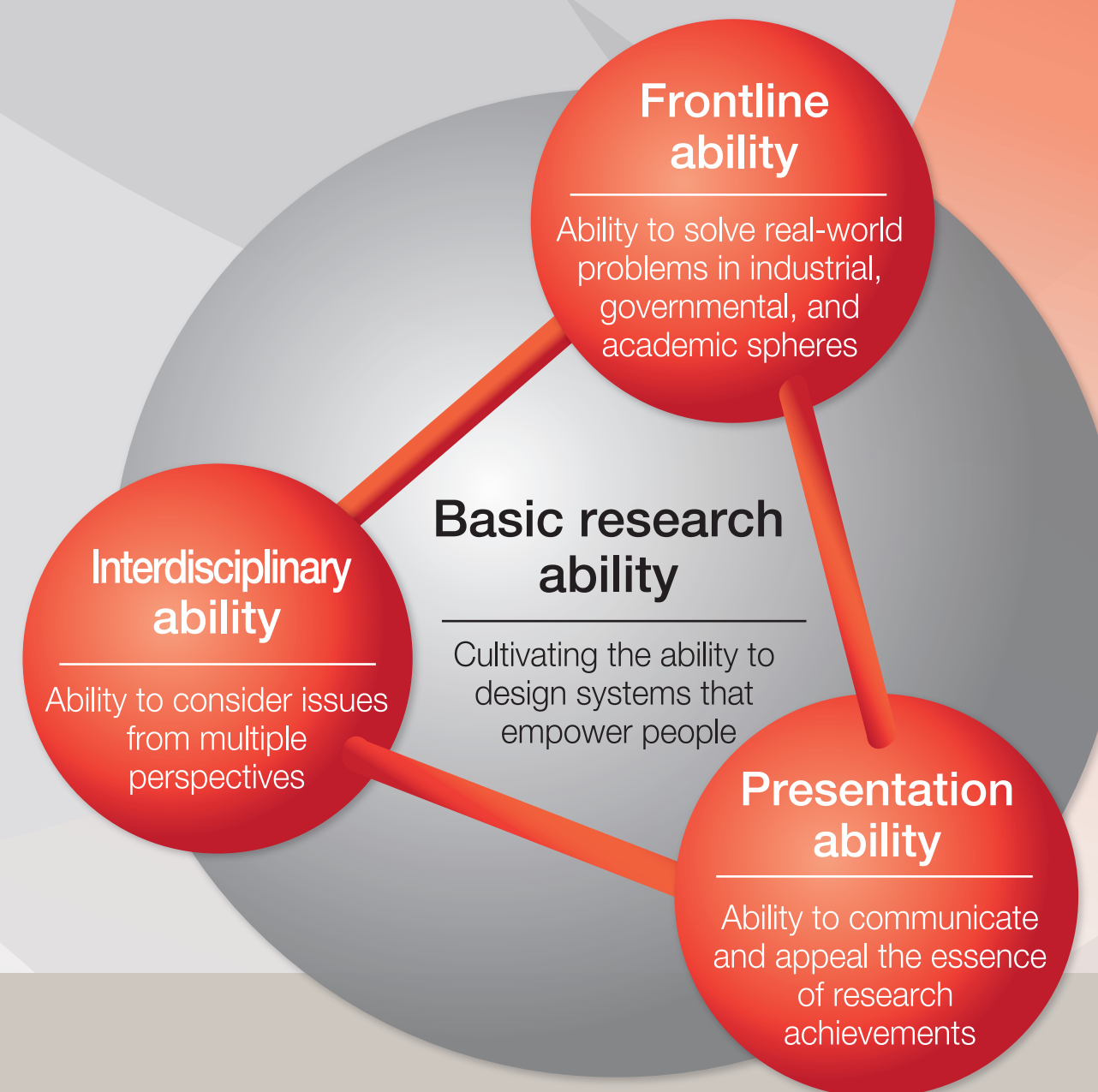


# INFORMATICS FOR EMPOWERING PEOPLE

A new branch of informatics that supplements  
and extends human functions and enables technology  
to work in harmony with people.

## WHAT WE OFFER STUDENTS

- **Interdisciplinary course:** informatics, engineering, arts, psychology, neuroscience, clinical medicine, nursing science
- **Unique curriculum** underpinned by the three pillars of 'Supplementation', 'Harmony', and 'Extension'
- **Excellent environment** for students to engage in interactive and collaborative learning and research activities (e.g. Empowerment Dormitory, Empowerment Studio)
- **Financial support:** a monthly stipend of 180,000 to 200,000 yen, tuition exemption, financial aid for overseas activities, etc.
- **Practical research trainings** designed for students to develop interdisciplinary, presentation, and frontline skills as well as basic research abilities (as given in the right figure).
- **Support from Multidisciplinary Research Advisory Team** composed of domestic and overseas industrial, governmental, and academic leaders



## PH.D. PROGRAM IN EMPOWERMENT INFORMATICS (EMP)

EMP is an interdisciplinary 5-year Ph.D. program to develop students' abilities necessary to assume global leadership roles across all spheres of industry, government, and academia.

<http://www.emp.tsukuba.ac.jp/>